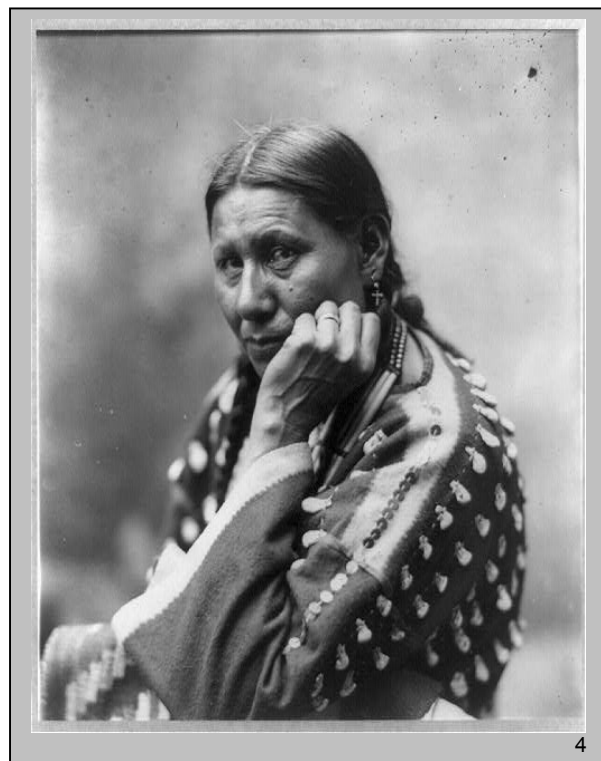
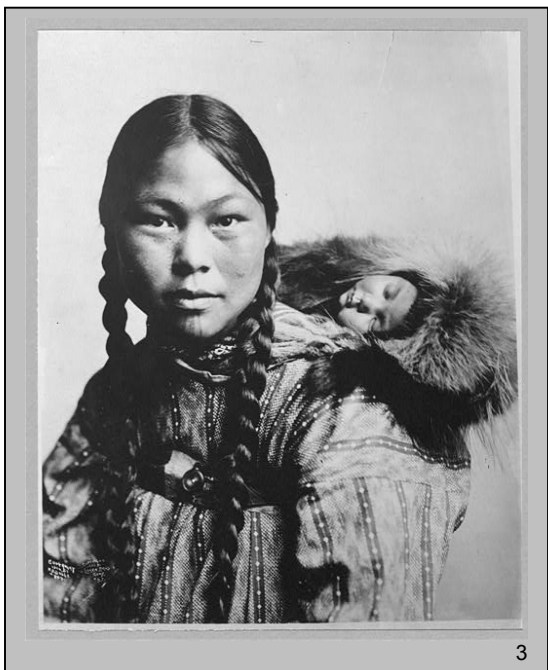
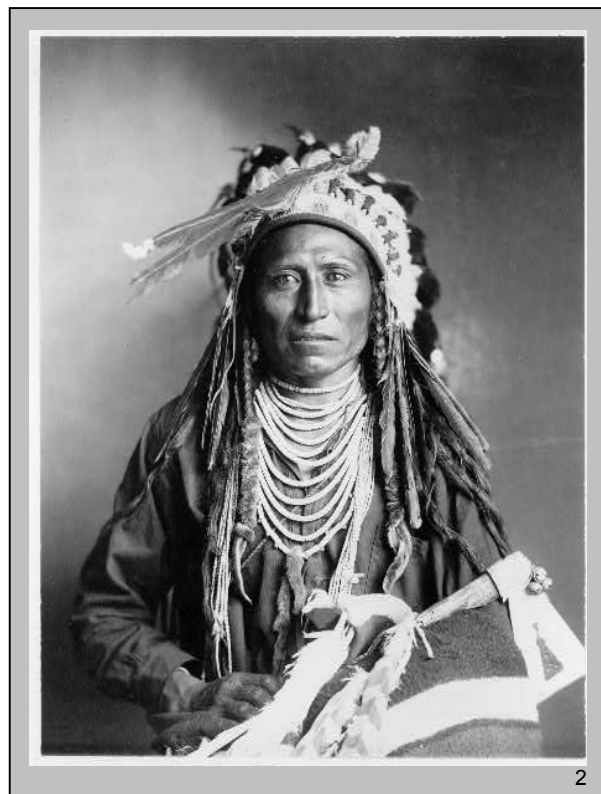
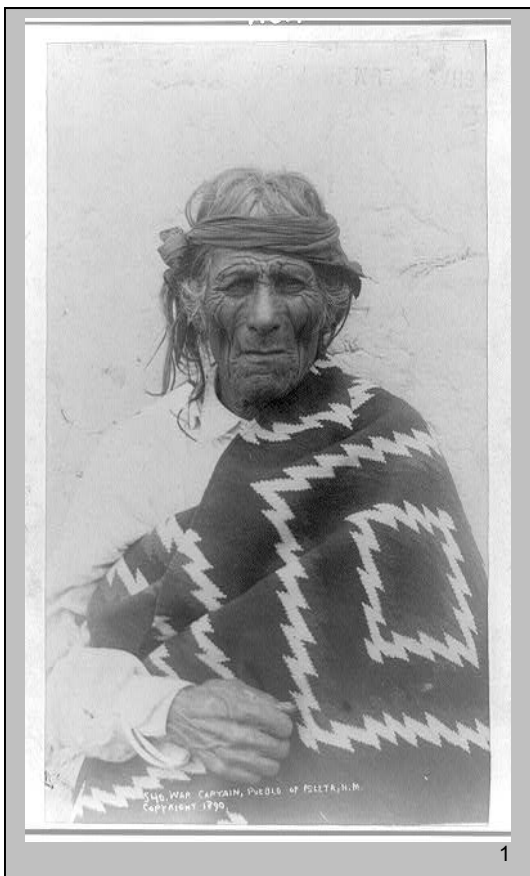
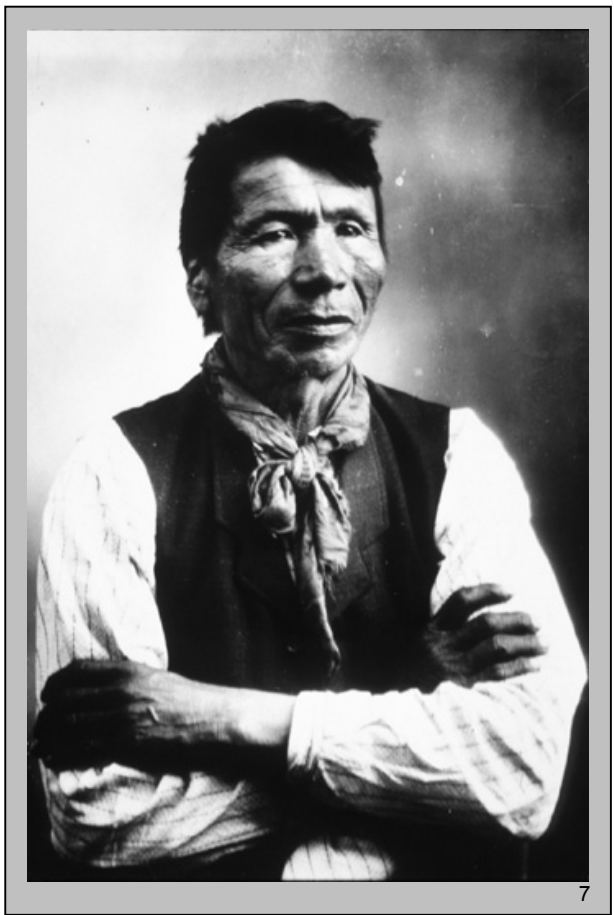


Studio Portraits of **NATIVE AMERICANS** by white photographers, ca. 1886 - 1907







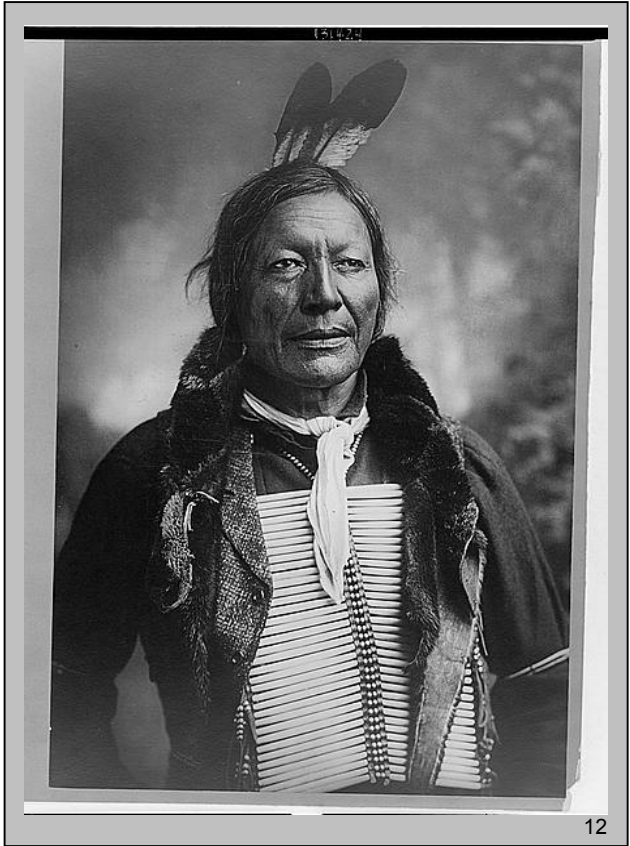
9



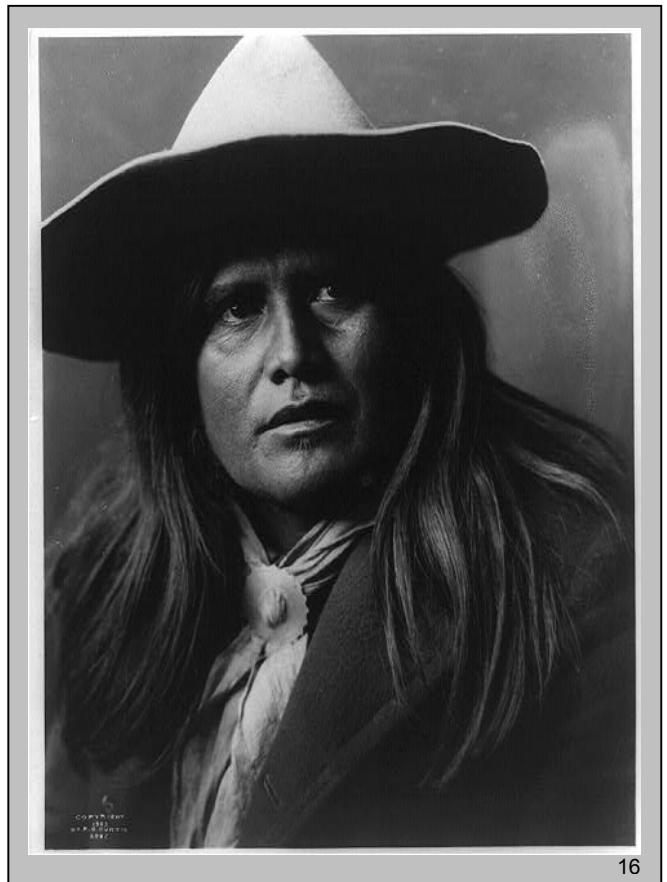
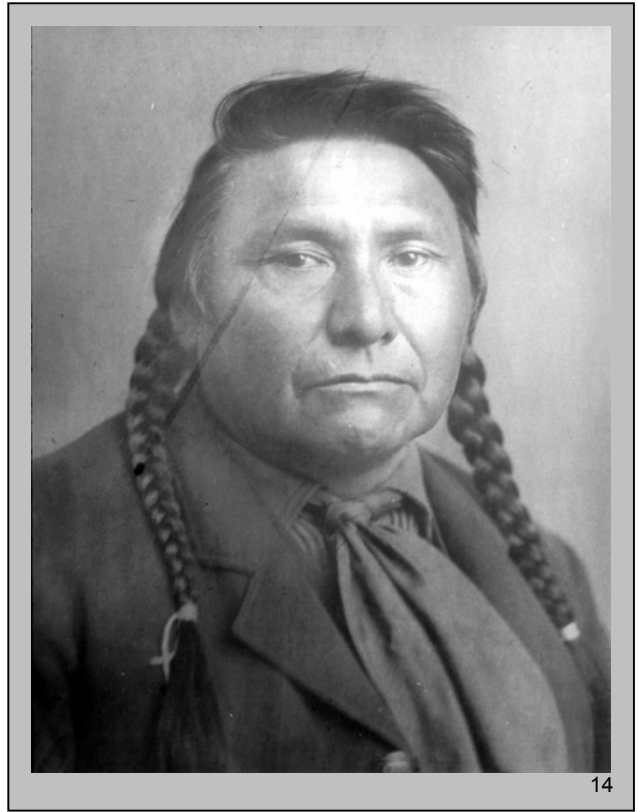
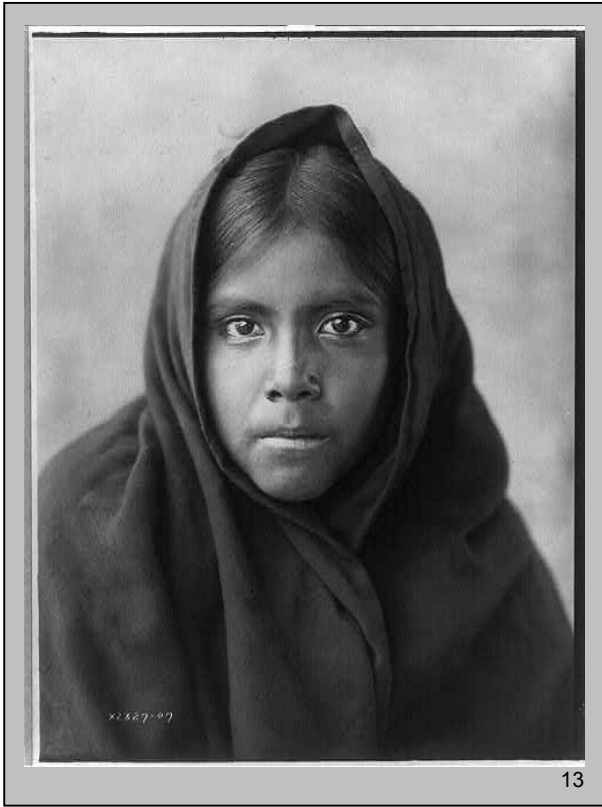
10

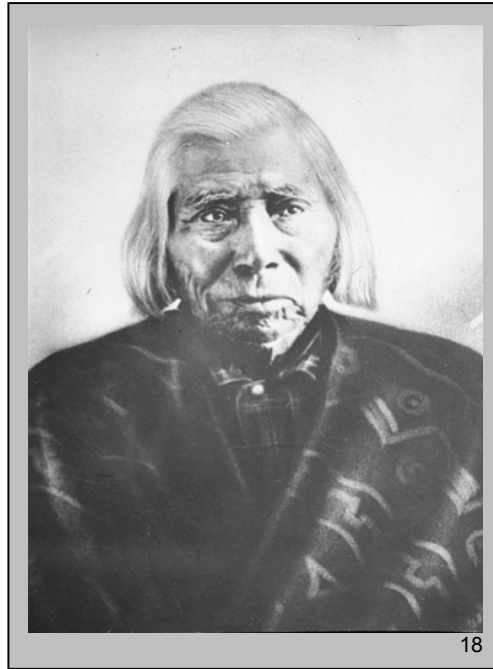


11



12





1. **Unidentified Man**, Pueblo tribe, Isleta, New Mexico, 1890. Ph (photographer): Charles F. Lummis.
2. **Heebe-tee-tse**, Shoshone tribe, probably Colorado, 1899. Ph: Rose & Hopkins. Library of Congress.
3. **Unidentified Woman and Child**, Eskimo tribe, Alaska, 1906. Ph: Lomen Bros. Library of Congress.
4. **Philomen Turning Hawk** (4), **Stands Hard** (5), Omaha or
5. Sioux tribe, and **Geronimo** (6), Apache tribe; may have
6. been taken at the Indian Congress of the Trans-Mississippi and Internatl. Exposition in Omaha, 1898. Ph: Herman Heyn (4&5), Adolph F. Muir (6). Library of Congress.
7. **Unidentified Man**, Colville tribe, Washington, ca. 1900. Ph: Frank Palmer. Northwest Museum of Arts and Culture.
8. **Unidentified Native American student**, Hampton Institute, Hampton, Virginia, between 1899 and 1900. Ph: Frances Benjamin Johnston. Library of Congress.
9. **Chief Gall**, Hunkpapa band (Sioux), Dakota Terr., 1896. Ph: O. S. Goff [Copyright D. F. Barry]. Library of Congress.
10. **"Billy Bowlegs"**, Seminole tribe, Florida, 1895. Ph: Arthur P. Lewis. Library of Congress.
11. **"Squaw and papoose"**, Ute tribe, Colorado, 1902. Ph: Samuels & Mays. Library of Congress.
12. **Fire Lightning**, Dakota tribe, Dakota Territory, 1891. Ph: Charles M. Bell. Library of Congress.
13. **Unidentified girl**, Qahatika tribe, Arizona, 1907. Ph: Edward S. Curtis. Library of Congress.
14. **Chief Joseph**, Nez Perce tribe, Oklahoma, ca. 1886. Ph: Unidentified. Northwest Museum of Arts and Culture.
15. **Lucille**, Dakota tribe, Dakota Territory (?), 1907. Ph: Edward S. Curtis. Library of Congress.
16. **Unidentified Man** (photo entitled "An Ostoho Cow Boy — Apache"), Apache tribe, 1903. Ph: Edward S. Curtis. Library of Congress.
17. **Angeline**, daughter of Chief Seattle, Suquamish tribe, Washington, ca. 1895. Ph: Asahel Curtis. University of Washington Libraries.
18. **"Spokane Garry"**, Spokane chief, Washington, 1892. Ph: Sherman Baker. Northwest Museum of Arts and Culture.
19. **Jane Silcott**, Nez Perce tribe, Idaho, ca. 1898. Ph: Unidentified. Northwest Museum of Arts and Culture.